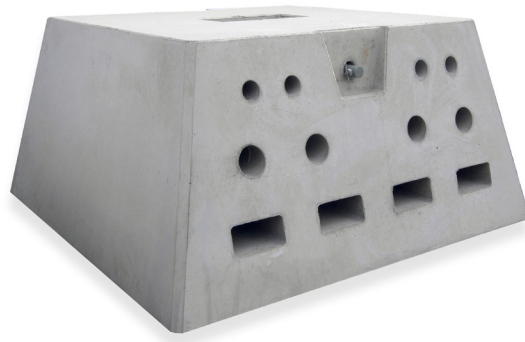
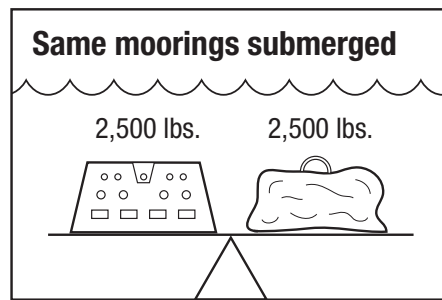
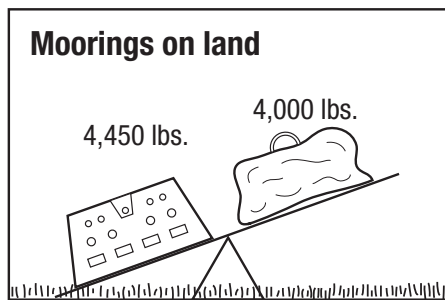


# HMS4000



## Holding power equals 4,000 lbs. of granite.

With a gross dry weight of 4,450 pounds, the HMS 4000 delivers the same holding power as 4,000 pounds of granite when the two are submerged.\*



\*As determined by independent testing at University of Maine, Orono. See our website for details.

This holding power is bolstered by a patent pending hitch rod that inserts through the mooring and locks in place with a heavy duty bolt. The ground chain can be threaded directly onto the hitch rod, thus eliminating the need for a shackle. The HMS 4000 is a snap to rig. To see how easy it is, watch our video at [habitatmooring.com](http://habitatmooring.com).

**Also available: HMS 1000, HMS 2000 and HMS 5000.** Like the HMS 4000, each model number relates to the equivalent holding power of granite weight when submerged.

## A powerful draw for marine life.

The HMS 4000 deployed at Seal Harbor, Maine has attracted over 30 species of vertebrates and invertebrates, including lobster, Atlantic cod, flounder, pollack, sculpin, crabs and mollusks, as well as kelp and other important marine plants. For a complete list of species observed at the mooring, go to [habitatmooring.com](http://habitatmooring.com).